

**My Teach Connect**  
Empowering Education Digitally

# MY TEACH CONNECT – THE FUTURE OF SMART SCHOOL MANAGEMENT

## PRESENTATION



Presented For:  
**My Teach Connect**

Presented By:  
**Tsinda Media Ltd**

+250-798-873-226  [www.myteachconnect.com](http://www.myteachconnect.com) 

# THE HIDDEN CHALLENGES IN SCHOOL MANAGEMENT

## The Reality Before My Teach Connect

Many schools still rely on manual, paper-based systems for managing students, teachers, and administrative tasks. This leads to:

- **Wasted Time:** Teachers spend hours on attendance, grading, and paperwork instead of focusing on teaching.
- **High Costs:** Printing records, admission forms, and report cards can cost schools thousands every year.
- **Communication Gaps:** Parents struggle to stay informed about their child's progress, fees, and school events.
- **Errors & Mismanagement:** Manual fee collection, attendance tracking, and student records often lead to mistakes and financial losses.

**But what if there was a smarter way?**





# THE ULTIMATE ALL-IN-ONE SCHOOL MANAGEMENT SOLUTION

My Teach Connect is a powerful, easy-to-use platform designed to help schools:

- ✓ **Manage Students & Teachers Effortlessly** (Attendance, Results, Homework, Timetables)
- ✓ **Streamline Administration** (Fees, Expenses, Library, Transport)
- ✓ **Enhance Communication** (SMS & Email Alerts to Parents & Staff)
- ✓ **Digitize Learning** (Live Classes, Study Materials, ID Cards, and Certificates)
- ✓ **Improve Efficiency & Save Costs** (Automation reduces workload and expenses)

**It's time to upgrade your school and say goodbye to outdated systems!**





# HOW MUCH TIME & MONEY CAN YOUR SCHOOL SAVE?

## Example 1: Attendance Management

**Let's say your school has 500 students and 20 teachers.**

- Manual Attendance takes 10 minutes per class.
- 5 periods per day × 20 teachers = 1,000 minutes wasted daily.
- That's 16 hours per day (Almost 2 full-time staff members working on just attendance).
- Annual Cost Estimate: If 2 staff members earn 200,000Rwf/month, that's 2,400,000Rwf per year wasted just on attendance tracking.

**✓ With My Teach Connect: Attendance is recorded in seconds, saving time and salaries.**



A young girl with dark curly hair, wearing glasses and a white school shirt with a pink backpack, is smiling and waving her right hand. The background is a solid dark blue.

# HOW MUCH TIME & MONEY CAN YOUR SCHOOL SAVE?

## Example 2: Printing & Paper Costs

**A school managing 500 students  
typically prints:**

- Admission forms, fee receipts, report cards, and notices.
- Estimated printing cost per student/year: 10,000Rwf
- Total printing cost: 5,000,000Rwf per year

**✓ With My Teach Connect: Digital records  
reduce paper usage, saving at least  
5,000,000Rwf annually.**

# BENEFITS FOR SCHOOLS, PARENTS, AND STUDENTS

Before the introduction of **My Teach Connect**, schools struggled with time-consuming and costly manual processes. Administrators, teachers, and parents faced challenges that impacted efficiency and student success.

## Who Benefits from My Teach Connect?



For Schools



For Parents



For Students





# WHO BENEFITS FROM MY TEACH CONNECT?

## For Schools:

- ✓ Save thousands by reducing paperwork, staff workload, and manual errors.
- ✓ Get instant reports on finances, student progress, and staff performance.
- ✓ Ensure smooth communication between teachers, parents, and students.

## For Parents:

- ✓ Track student progress, attendance, and results in real time.
- ✓ Pay school fees online with a few clicks.
- ✓ Get instant notifications about school events and assignments.

## For Students:

- ✓ Access study materials and homework anytime.
- ✓ View schedules, exam timetables, and results instantly.
- ✓ Participate in live classes from anywhere.

## ✓ The Solution?

Our platform automates and digitizes school management, eliminating manual work, reducing costs, and improving communication. Schools, parents, and students all benefit—making education smarter, faster, and more efficient!

# OWN MY TEACH CONNECT FOR A LIFETIME + CUSTOM SCHOOL WEBSITE

Empower your school with a one-time investment in My Teach Connect and receive a fully customised website integrated with all its features. Instead of paying monthly subscriptions, secure a lifetime license and enjoy unlimited access to essential school management tools.

## What's Included in the Lifetime Package?

### ✓ Full My Teach Connect System

No recurring payments – pay once and own it forever.

### ✓ Custom School Website

Branded and tailored to your school's unique needs to strengthen your online presence.

### ✓ Complete Integration

Including online admissions, fee management, attendance, live classes, student records, and more.

### ✓ One Year Free Support

Get free updates and support for 12 months to ensure smooth operations.

### ✓ Secure & Scalable Solution

Built with robust security and scalability to grow with your school's future needs.





# PROJECT TIMELINE

The system and website development, testing, and deployment will follow the timeline below:

- ✓ **System & Website Development:** 30 business days
- ✓ **Testing & Deployment:** 15 business days after development
- ✓ **Training & Handover:** 1 week after deployment

## SUPPORT & MAINTENANCE

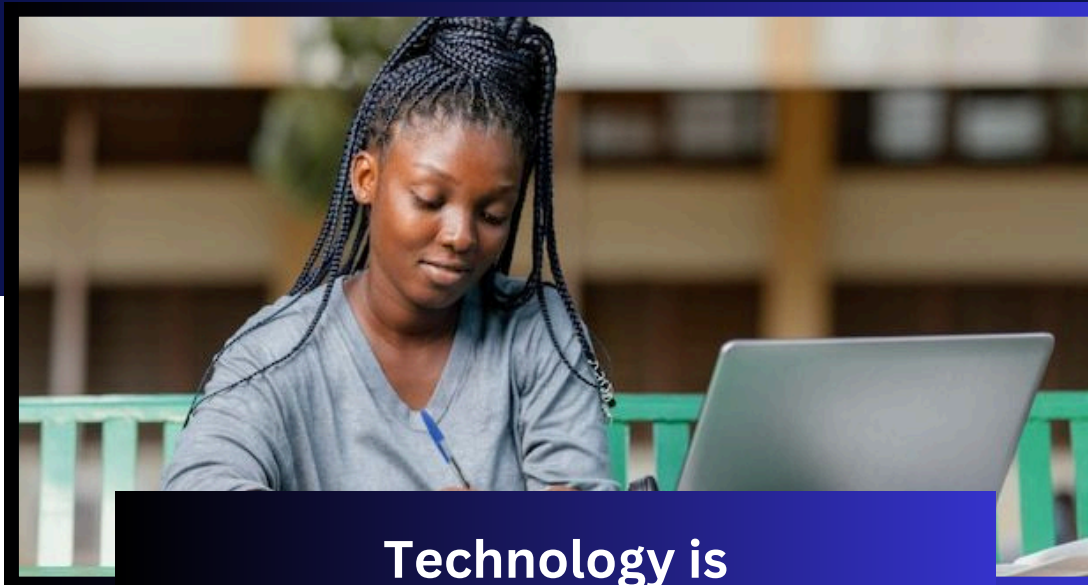
Tsinda Media Ltd guarantees lifetime access to **My Teach Connect**, including continuous maintenance, updates, and technical support for any issues related to the platform.

# FEATURES SCHOOLS GET ACCESS TO

- ✓ **Online Student Admission** – No more paper-based admissions!
- ✓ **Online School Fee Submission** – Secure online payments.
- ✓ **Attendance Tracking** – Automate attendance records.
- ✓ **Library Management** – Track books and student borrowing history.
- ✓ **Accounting System** – Keep track of income and expenses.
- ✓ **Student Card Generator** – Instantly create student ID cards.
- ✓ **Homework & Results Management** – Digital grading and reports.
- ✓ **Transport Management** – Optimize school bus routes.
- ✓ **Class & Exam Time Tables** – Organize schedules efficiently.
- ✓ **Live Classes & Custom Certificates** – Improve online learning.
- ✓ **Parent & Student Dashboards** – Personalized experience for all users.
- ✓ **Setup Assistance & Ongoing Support** – 12/5 customer support.



# THE FUTURE IS DIGITAL – DON'T GET LEFT BEHIND



**Technology is  
transforming education**

My Teach Connect ensures your  
school stays ahead.



**Boost efficiency**

Save thousands every year by  
reducing manual work and  
paperwork.

**My Teach Connect**  
Empowering Education Digitally

**THANK YOU  
FOR YOUR ATTENTION**

**Contact Us**

info@myteachconnect.com 

+250-798-873-226 

KN 84 Street, Kigali-Rwanda

 [www.myteachconnect.com](http://www.myteachconnect.com) 